

International  
**Damage catalogue**



## Table of Contents

<b>1. Preface .....</b>	<b>3</b>
Rental car insurance available in Hungary.....	5
Collision Damage Waiver (CDW).....	5
Third Party Insurance (TI) .....	6
Theft Protection (TP).....	6
Personal Accident Protection (PAP).....	7
Top Cover TP (H) .....	7
Top Cover CDW (G).....	7
Super Top Cover CDW (GF) .....	8
Tyre and Windscreen Coverage (GT) .....	8
<b>2. Definition of the damage strengths .....</b>	<b>9</b>
<b>3. Damage catalogue in pictures.....</b>	<b>13</b>
3.1 Damage on the carriage.....	13
3.1.1 Scratch.....	13
3.1.2 Dent .....	21
3.1.3 Break .....	27
3.1.4 Crash.....	32
3.1.5 Missing.....	38
<b>3.2 Damage on the interior .....</b>	<b>42</b>
3.2.2 Scratch.....	42
3.2.3 Not fixed.....	43
3.2.4 Rip .....	44
3.2.5 Burn hole .....	45
3.2.6 Missing.....	47
3.3 Tires and Wheels.....	51
3.3.1 Rip .....	51
3.3.2 Crash.....	52
3.3.3 Scratch.....	54
3.4 Window .....	55
3.4.1 Rip.....	55
3.4.2 Break .....	56
3.4.3 Rock fall.....	57

## 1. Preface

To standardize the processes of car return and damage handling, new work papers, processes and guidelines were prepared.

Valid bases for the **comprehensibility** and for the **transparency** of the damage admission must be defined from the renting stations. The definition of an obligatory standard is part of the most important bases for a correct damage admission of the vehicles.

In order to be able to make the right judgement of damages the differentiation between **traces of usage** and **real damages** is crucial.

Traces of usage arise from the use of the vehicle as agreed and are unavoidable and therefore excluded as damage. The vehicle can be rented again without immediate repairs as it is in a **safe and immaculate technical condition**. Examples: minor cracks on the painting or dents smaller than Ø 2 cm.

Damages, such as scratches or dents where the vehicle can be rented again without immediate repair, are no traces of usage and are therefore described in this catalogue.

All damages where immediate repair is required, such when the vehicle is **not roadworthy anymore**, it has technical faults or the safety cannot be guaranteed, an individual inspection by a workshop might be applicable in addition to this catalogue. Example: crash of several parts.

In the event of **contiguous damage** to two or more items, **one deductible** will be charged.

In the event of **unrelated damage** to two or more items, **multiple deductibles** will be charged

A conscientious inspection of the vehicle is important for a correct judgement of the damages; corresponding conditions are necessary when doing the inspection. Essential prerequisites for the inspection of the vehicle are **daylight and/or sufficient artificial light**. Also adequate **weather conditions** in case of an outer inspection.

The typical damages of a rental vehicle are visualized in this damage catalogue by means of **example pictures and a clear classification**. Every picture describes a vehicle part and is judged based on the **level of severity**.

In addition to the below mentioned damage charges, other charges might apply as well, such as administrative costs, loss of usage of the vehicle, towing costs, transfer costs, etc.

**If a damage type is not included in the catalogue, the price of the quotation received from the branded service will be valid.**

**Repair Costs in the catalogue are also priced by the branded service.**

## Rental car insurance available in Hungary

Rental cars can be covered by various insurance policies. In Hungary all motor vehicle operators must have mandatory liability insurance (third party insurance) in case the renter causes collision damage to another party's vehicle. Consequently, car rental fees include mandatory liability insurance in all cases.

**Please note that in case of theft or total value damage, the non waivable responsibility is 10% of present value of the rented car.**

The Client shall be liable for any damages arising in the vehicle during the rent under unknown circumstances (e.g. damages caused by unknown perpetrator). If the car is entered by force, the Client shall be responsible for making the relevant denunciation at the Police station.

The Client shall be liable up to the new purchase price of the car as applicable from time to time if:

- The CDW and/or TP insurance is not provided and the car driven by the Client is subject to damages for an accident caused by the fault of The Client or the car is stolen. In this case The Client is responsible for the complete repair cost of the damage, which is calculated by the official brand workshop.
- The car is stolen and the Client is not able to present to the Lessor the circulation license and/or the keys of the car.

**Please note that the Client shall be liable for any new damages arising during the term of hire even if the Check out/in protocol is not signed at the time of return (e.g. you return the car out of hours or you do not wait until the report is completed).**

## Collision Damage Waiver (CDW)

We recommend CDW insurance to reduce the compensation payable by the renter should the rental car be involved in an accident that the renter is responsible for. With CDW coverage the renter may only be held liable for up to the excess amount per loss event. The excess amount depends on the car group (see the table below). You can reduce the excess amount further if in addition to CDW coverage you also opt for our Top Cover CDW or Super Top Cover CDW insurance coverage. The applicable excess amounts are shown in the table below.

The renter will be financially liable for any damage sustained by the rental vehicle during the rental period that the renter was not aware of at the time it was sustained (e.g. damage caused by unknown parties). If the car is broken into, the renter must report the incident to the police. CDW insurance will not cover damage to the glass, wheels or tires of the rental vehicle, damage to the passenger compartment or damage from misuse.

Collision Damage Waiver removes the drivers responsibility to a part of the vehicle in case of damage.

If CDW is not accepted the customer will be held liable for the full value of the car.

If CDW is accepted, customer is only responsible for the following amounts:

CRS Code	Deductible
MCMN, MCMR, ECMR, EDMR, EXMR, EDAR, EDAH	800.00 EUR
CCMR, CDMR, CXMR, CCMH, CCCC, CCAR, CDAR, CDAH, CWMR, CWAR, CWAH	900.00 EUR
CLMR, CPMR, ICMR, IDMR, ILMR, CLAR, CPAR, CSAR, CLAE, ICAR, IDAR, IWAR, IVMR, IVAR, IFMR, CFAR, IFAR	1,300.00 EUR
SCMR, SDMR, SDAR, SDAH, SWMR, SWAR, SVMR, SVAR, SFMR	1,500.00 EUR
FDMR, ILAR, ISAR, SPAR, SSAR, ILAE, FDAR, FFAR, FXAR, FWAR, STMR, SFAR, FFAH	1,800.00 EUR
PDAR, PLAR, PDAH, PWAR, FVMR, PVMR, FVAR, PVAR, PTAR, PFMR, PFAR	2,300.00 EUR
LFAR, LSAR, XDAR, XPAR, XSAR, XJAN, LWAR, LVAR, LTAR, XTMX, XFAN, XFAR	2,700.00 EUR

The CDW insurance shall not include damages to wheels and tyres, as well as damages arising in the passenger cabin or arising from improper handling and damages of bottom of the car.

## Third Party Insurance (TI)

Protection coverage for the vehicle includes Third Party Liability with unlimited cover for personal injuries and material damages. Excluded from the protection is the use of the vehicle for the transport of dangerous goods. All protection as part of the rental contract will become void, in particular, if an unauthorized driver has used the vehicle or if the driver of the vehicle does not possess the required driver's license at the time of the event giving rise to claim.

## Theft Protection (TP)

Theft Protection removes the drivers responsibility to a part of the vehicle in case of theft.

If TP is not accepted, the customer will be held liable for the full value of the car.

If TP is accepted, customer is only responsible for the following amounts:

CRS Code	Deductible
MCMR, MCMR	2,300.00 EUR
ECMR, EDAH, EDAR, EDMR, EXMR, CCAR, CCCC, CCMH, CCMR, CDAH, CDAR, CDMR, CXMR, CWMR, CWAR, CWAH	3,800.00 EUR
CLMR, CLAR, CLAE, CPMR, CPAR, CFAR, CSAR, IDMR, IDAR, ICMR, ICAR, ILMR, IVMR, IVAR, IFMR, IFAR, SDMR, SDAR, SDAH, SCMR, SWMR, SWAR, SVMR, SVAR, SFMR	5,800.00 EUR
ILAE, ILAR, ISAR, FDAR, FDMR, FXAR, FFAR, FWAR, FFAH, FVAR, FVMR, STMR, SPAR, SSAR, SFAR	6,500.00 EUR
LFAR, LSAR, LTAR, LVAR, LWAR, PDAH, PDAR, PFAR, PFMR, PLAR, PTAR, PVAR, PVMR, PWAR, XDAR, XFAN, XFAR, XJAN, XPAR, XSAR, XTMX	9,500.00 EUR

## Personal Accident Protection (PAP)

By taking out personal accident protection can also be extended to cover the consequences of an accident with impact on the driver.

By taking out personal accident protection the limit of liability is:

1,700.00 EUR for Accidental death protection,  
3,300.00 EUR for Accidental total disability protection.  
(Personal Accident Protection = I)

## Top Cover TP (H)

If TP is already included in the rates, the renter can choose Top Cover TP to reduce the Non-Waiverable Responsibility.

If Top Cover TP is accepted, customer is only responsible for the following amounts: 0 EUR

## Top Cover CDW (G)

If CDW is already included in the rates, the renter can choose Top Cover CDW to reduce the Non-Waiverable Responsibility.

If Top Cover CDW is accepted, customer is only responsible for the following amounts:

CRS Code	Deductible
MCMN, MCMR, ECMR, EDMR, EXMR, EDAR, EDAH	400.00 EUR
CCMR, CDMR, CXMR, CCMH, CCCC, CCAR, CDAR, CDAH, CWMR, CWAR, CWAH	450.00 EUR
CLMR, CPMR, ICMR, IDMR, ILMR, CLAR, CPAR, CSAR, CLAE, ICAR, IDAR, IWAR, IVMR, IVAR, IFMR, CFAR, IFAR	650.00 EUR
SCMR, SDMR, SDAR, SDAH, SWMR, SWAR, SVMR, SVAR, SFMR	750.00 EUR
FDMR, ILAR, ISAR, SPAR, SSAR, ILAE, FDAR, FFAR, FXAR, FWAR, STMR, SFAR, FFAH	900.00 EUR
PDAR, PLAR, PDAH, PWAR, FVMR, PVMR, FVAR, PVAR, PTAR, PFMR, PFAR	1,150.00 EUR
LFAR, LSAR, XDAR, XPAR, XSAR, XJAN, LWAR, LVAR, LTAR, XTMX, XFAN, XFAR	1,350.00 EUR

## Super Top Cover CDW (GF)

If Top Cover CDW is already included in the rates, the renter can choose Super Top Cover CDW to eliminate the Non-Waiverable Responsibility.

If Top Cover CDW is accepted, customer is only responsible for the following amounts: 0 EUR

## Tyre and Windscreen Coverage (GT)

The tire and glass coverage provides protection for damages on tires, windscreen, side windows and the rear window with a deductible of EUR 0.00.

If the protection is not accepted, the customer will be held liable for the full extent of the damage.



## 2. Definition of the damage strengths

### Scratch

Scratches are mechanical damages to the surface which are caused by sharp/pointed objects and are mostly visible as a longish deepening.

We define the scratching damage about the **forming** (superficial or deep) and **the length or size** of the scratches.

- over 20mm **OR** reaches ground coat

A **deep scratch** is characterized by a perceptible deepening in the paintwork. This damage only can be cleared by painting or renewal of the component.

### Dent

A **dent** is a concave<sup>1</sup> deformation distortion at the surface of the car body. We define dents **with** and **without varnish damage** as well as **different diameters** of the dents.

- $\varnothing$  over 20mm **OR** element contains more than 2 dents

A dent without varnish damage can in general be removed by pushing or pulling. In case the dent has caused damages at the paintwork, the entire area needs to get repainted.

Dents at **plastic components** (e. g. bumper) in general only can be removed by exchanging the respective parts.

### Break

A **break** describes a plastic deformation of a component up to its destruction. The break of a component is in general made by an outer strength influence (e. g. annoyance).

Attachments like headlight, rear lights, mirror glass, mirror case are examples of broken items.

<sup>1</sup>Deformation by strength influence from the outside inside

## Crash

A **crash**, is defined as a heavy damage of one or several connected elements, which extend the category of scratch, dent , break.

## Missing

Missing defines the “***no longer available***” status of a component in the vehicle. Most common items are rear luggage cover, aerial radio devices, GPS CD's or SD cards.

The exchange or theft of the original wheels/tires or the spare wheel also is described about this damage strength.

## Not fixed

The damage strength **not fixed** describes an unfastened or loose component at the vehicle.

Examples of it are using levers, switch or also seats

## Defect

The condition **defect** defines generally this “*not working any more*” a mechanical or also electrical component in the vehicle. The reason for it can be justified itself by an outer influence (e. g. being missing operation, violent damage) like also failure of the component both.

Being able to list key, remote control, radio etc. as examples of faulty components.

### Rip

A **rip** is a damage to the surface of a component by an outer influence or overtaxing.

Construction tarpaulins, upholstery/seats, interior trim or also tire, are examples of this damage strength.

### Hole

The damage strength **hole** defines an opening/a cavity in a component generally and is by an outer influence or rather penetrate a foreign material to the surface caused.

Examples of the damage strength “hole” are tires, stuffing, seats interior trim or open building plan.

### Warped

The damage strength **warped** defines the mechanical damage to a component by an outer strength influence.

Examples for warped components are loading up side, hydraulic cylinder, windshield wiper arm or number plates.

### Untight

The damage strength **untight** describes out systems or containers generally an outflow of liquids in the vehicle.

Examples of liquid leaving are water cooler, condenser or sump.

### Soiled

The condition **soiled** describes generally an excessive pollution of the vehicle, particularly the interior or the cargo hold or trunk. These can result from an improper use for also inadequate securing of load. Not removable, visible spots are a considerable defect in the cabin. Pollutions which aren't removable by a normal cleaning on the station are considered a damage.

Examples of it are soil attachments in the suitcase or cargo hold of the vehicle to seat, carpet or interior trims like liquids also run out.

### Burn hole

The damage strength burn hole defines a damage by impact of heat caused mostly by **cigarette burning** ash falling down or handling a cigarette inattentively in the interior of the vehicle.

Damage pictures happening frequent are burn holes in the area of the A column driver side at seats, car mats, interior trims of the doors like also at the roof interior trim.

### Rock fall

A **rock fall** is a selective damage to the surface to car body components (e. g. bumper, headlight, hood, windshield) and arises in general from foreign elements whirled up. Rock falls can be removed painting the damaged zones, exchange or also Smartrepair. A rock fall is a selective damage this one whether "**field of view**" (Piece of paper area of the wiper blade driver side) and "**not in the field of view**" distinguished.

### Damage by hail

Damages caused by **hail** describes plenty of dents all over the car body.

### 3. Damage catalogue in pictures

#### 3.1 Damage on the carriage

##### 3.1.1 Scratch

Example:



Element: Wing/Fender



		M****; E****	C****; I****; S****	F****; P****	L****; X****
		over 2 cm / part	over 2 cm / part	over 2 cm / part	over 2 cm / part
Fender scratch / Sárvédő karc	On the Surface	45€ / 15000 FT	45€ / 15000 FT	55€ / 18000Ft	60€ / 20000FT
	On the ground coat, no hole	165€ / 55000FT	225€ / 75000Ft	240€ / 80000Ft	375€ / 125000Ft

Example:



**Element:** Fender/Wing



		M****; E****	C****; I****; S****	F****; P****	L****; X****
		<i>over 2 cm / part</i>	<i>over 2 cm / part</i>	<i>over 2 cm / part</i>	<i>over 2 cm / part</i>
Fender scratch / Sárvédő karc	On the Surface	45€ / 15000 FT	45€ / 15000 FT	55€ / 18000Ft	60€ / 20000FT
	On the ground coat, no hole	165€ / 55000FT	225€ / 75000Ft	240€ / 80000Ft	375€ / 125000Ft

Example:



**Element:** Bumper (rear)

		M****; E****	C****; I****; S****	F****; P****	L****; X****
Bumper scratch / Vészárító karc		<i>over 2 cm / part</i>	<i>over 2 cm / part</i>	<i>over 2 cm / part</i>	<i>over 2 cm / part</i>
	On the Surface	45€ / 15000 FT	45€ / 15000 FT	55€ / 18000Ft	60€ / 20000FT
	On the ground coat, no hole	165€ / 55000FT	225€ / 75000Ft	240€ / 80000Ft	375€ / 125000Ft

Example:



Element: Bumber (front)



		M****; E****	C****; I****; S****	F****; P****	L****; X****
Bumper scratch / Vészhárító karc		<i>over 2 cm / part</i>	<i>over 2 cm / part</i>	<i>over 2 cm / part</i>	<i>over 2 cm / part</i>
	On the Surface	45€ / 15000 FT	45€ / 15000 FT	55€ / 18000Ft	60€ / 20000FT
	On the ground coat, no hole	165€ / 55000FT	225€ / 75000Ft	240€ / 80000Ft	375€ / 125000Ft



Example:



Element: Doors



		M****; E****	C****; I****; S****	F****; P****	L****; X****
		<i>over 2 cm / part</i>	<i>over 2 cm / part</i>	<i>over 2 cm / part</i>	<i>over 2 cm / part</i>
Doors scratch / Ajtó karc	On the Surface	45€ / 15000 FT	45€ / 15000 FT	55€ / 18000Ft	60€ / 20000FT
	On the ground coat, no hole	165€ / 55000FT	225€ / 75000Ft	240€ / 80000Ft	375€ / 125000Ft

Example:



Element: Roof

		M****; E****	C****; I****; S****	F****; P****	L****; X****
Top of the car scratch / <b>Tető</b> karc		<i>over 2 cm / part</i>	<i>over 2 cm / part</i>	<i>over 2 cm / part</i>	<i>over 2 cm / part</i>
	On the Surface	45€ / 15000 FT	45€ / 15000 FT	55€ / 18000Ft	60€ / 20000FT
	On the ground coat, no hole	165€ / 55000FT	225€ / 75000Ft	240€ / 80000Ft	375€ / 125000Ft

Example:



**Element:** Engine bonnet



		M****; E****	C****; I****; S****	F****; P****	L****; X****
		<i>over 2 cm / part</i>	<i>over 2 cm / part</i>	<i>over 2 cm / part</i>	<i>over 2 cm / part</i>
Engine bonnet scratch / Motorház karc	On the Surface	45€ / 15000 FT	45€ / 15000 FT	55€ / 18000Ft	60€ / 20000FT
	On the ground coat, no hole	165€ / 55000Ft	225€ / 75000Ft	240€ / 80000Ft	375€ / 125000Ft

Example:



**Element:** Fender and doors



		M****; E****	C****; I****; S****	F****; P****	L****; X****
Doors scratch / Ajtó karc		over 2 cm / part	over 2 cm / part	over 2 cm / part	over 2 cm / part
	On the Surface	45€ / 15000 FT	45€ / 15000 FT	55€ / 18000Ft	60€ / 20000FT
	On the ground coat, no hole	Excess	Excess	Excess	Excess

### 3.1.2 Dent

Example:



**Element:** Engine bonnet



		M****; E****	C****; I****; S****	F****; P****	L****; X****
Engine bonnet dent / Motorház horpadás		max 2 pcs 2-5 cm / pcs	max 2 pcs 2-5 cm / pcs	max 2 pcs 2-5 cm / pcs	max 2 pcs 2-5 cm / pcs
	Without paintwork damages	75€ / 25000Ft	75€ / 25000Ft	90€ / 30000Ft	105€ / 35000Ft
		over 5 cm	over 5 cm	over 5 cm	over 5 cm
	With paintwork damages, no hole	165€ / 55000Ft	225€ / 75000 Ft	270€ / 90000 Ft	375€ / 125000 Ft
		over 2 pcs	over 2 pcs	over 2 pcs	over 2 pcs
		Excess	Excess	1350 € / 452000Ft	1750€ / 586000Ft

Example:



Element: Hatchback



		M****, E****	C****; I****; S****	F****; P****	L****; X****
Hatchback dent / Csomagtér horpadás		max 2 pcs 2-5 cm / pcs	max 2 pcs 2-5 cm / pcs	max 2 pcs 2-5 cm / pcs	max 2 pcs 2-5 cm / pcs
	Without paintwork damages	75€ / 25000Ft	75€ / 25000Ft	90€ / 30000Ft	105€ / 35000Ft
		over 5 cm	over 5 cm	over 5 cm	over 5 cm
	With paintwork damages, no hole	165€ / 55000Ft	225€ / 75000 Ft	270€ / 90000 Ft	375€ / 125000 Ft
		over 2 pcs	over 2 pcs	over 2 pcs	over 2 pcs
		Excess	Excess	1350 € / 452000Ft	1750€ / 586200 Ft

Example:



**Element:** Fender (front)



		M****, E****	C****, I****, S****	F****, P****	L****, X****
Fender dent / Sárvédő horpadás		max 2 pcs 2-5 cm / pcs	max 2 pcs 2-5 cm / pcs	max 2 pcs 2-5 cm / pcs	max 2 pcs 2-5 cm / pcs
	Without paintwork damages	75€ / 25000Ft	75€ / 25000Ft	90€ / 30000Ft	105€ / 35000Ft
		over 5 cm	over 5 cm	over 5 cm	over 5 cm
	With paintwork damages, no hole	165€ / 55000Ft	225€ / 75000 Ft	270€ / 90000 Ft	375€ / 125000 Ft
		over 2 pcs	over 2 pcs	over 2 pcs	over 2 pcs
	Excess	Excess	1350 € / 452000Ft	1750€ / 586200 Ft	



Example:



**Element:** Fender (rear)



		M****; E****	C****; I****; S****	F****; P****	L****; X****
Fender dent / Sárvédő horpadás		<i>max 2 pcs 2-5 cm / pcs</i>	<i>max 2 pcs 2-5 cm / pcs</i>	<i>max 2 pcs 2-5 cm / pcs</i>	<i>max 2 pcs 2-5 cm / pcs</i>
	Without paintwork damages	75€ / 25000Ft	75€ / 25000Ft	90€ / 30000Ft	105€ / 35000Ft
		<i>over 5 cm</i>	<i>over 5 cm</i>	<i>over 5 cm</i>	<i>over 5 cm</i>
	With paintwork damages, no hole	165€ / 55000Ft	225€ / 75000 Ft	270€ / 90000 Ft	375€ / 125000 Ft
		<i>over 2 pcs</i>	<i>over 2 pcs</i>	<i>over 2 pcs</i>	<i>over 2 pcs</i>
		Excess	Excess	1350 € / 452000Ft	1750€ / 586200 Ft



Example:



Element: Bumper (rear)



		M****; E****	C****; I****; S****	F****; P****	L****; X****
Bumper dent / Vészárító horpadás		max 2 pcs 2-5 cm / pcs	max 2 pcs 2-5 cm / pcs	max 2 pcs 2-5 cm / pcs	max 2 pcs 2-5 cm / pcs
	Without paintwork damages	75€ / 25000Ft	75€ / 25000Ft	90€ / 30000Ft	105€ / 35000Ft
		over 5 cm	over 5 cm	over 5 cm	over 5 cm
	With paintwork damages, no hole	165€ / 55000Ft	225€ / 75000 Ft	270€ / 90000 Ft	375€ / 125000 Ft
		over 2 pcs	over 2 pcs	over 2 pcs	over 2 pcs
		Excess	Excess	1350 € / 452000Ft	1750€ / 586200 Ft

Example:



Element: Bumper (front)



		M****, E****	C****, I****, S****	F****, P****	L****, X****
Bumper dent / Vészárító horpadás		max 2 pcs 2-5 cm / pcs	max 2 pcs 2-5 cm / pcs	max 2 pcs 2-5 cm / pcs	max 2 pcs 2-5 cm / pcs
	Without paintwork damages	75€ / 25000Ft	75€ / 25000Ft	90€ / 30000Ft	105€ / 35000Ft
		over 5 cm	over 5 cm	over 5 cm	over 5 cm
	With paintwork damages, no hole	165€ / 55000Ft	225€ / 75000 Ft	270€ / 90000 Ft	375€ / 125000 Ft
		over 2 pcs	over 2 pcs	over 2 pcs	over 2 pcs
		Excess	Excess	1350 € / 452000Ft	1750€ / 586200 Ft

### 3.1.3 Break

Example:



**Element:** Outside mirror (glass only)



		M****; E****	C****; I****; S****	F****; P****	L****; X****
Outside mirror (glass only) / Tükör (csak üveg)		120€ / 40000Ft	120€ / 40000Ft	150€ / 50000Ft	195€ / 65000Ft

Example:



**Element:** Direction indicator glass



		M****; E****	C****; I****; S****	F****; P****	L****; X****
Direction indicator glass / Tükör index		105€ / 35000Ft	105€ / 35000Ft	150€ / 50000Ft	180€ / 60000Ft

Example:



**Element:** Headlight

		M****; E****	C****; I****; S****	F****; P****	L****; X****
Headlight / Fényszóró	Surface scratch / Felületi karc	75€ / 25000Ft	90€ / 30000Ft	1400€ / 470000Ft	Önrész
	Broken / Törés	600€ / 200000Ft	800 € / 284000Ft	1400€ / 470000Ft	Önrész

Example:



Element: Tail lamp



		M****; E****	C****; I****; S****	F****; P****	L****; X****
Tail lamp / Hátsó lámpa		135€ / 45000Ft	450€ / 160000Ft	650€ / 218000Ft	1050€ / 352000Ft

Example:



**Element:** Aerial



		M****; E****	C****; I****; S****	F****; P****	L****; X****
Aerial missing / Antenna	Broken, missing / Törés, hiány	75€ / 25000Ft	120€ / 40000Ft	450€ / 150000Ft	650€ / 218000Ft



### 3.1.4 Crash

Example:



Element: Bumper (front)



		M****; E****	C****; I****; S****	F****; P****	L****; X****
Bumper broken crash / Vészhárító sérülés törés		Excess	Excess	1350 € / 452000Ft	1750€ / 586200Ft



Example:



**Element:** Fender (front)



		M****; E****	C****; I****; S****	F****; P****	L****; X****
Fender broken crash / Sárvédő sérülés törés		Excess	Excess	Excess	Excess

Example:



**Element:** Fender (rear)



		M****; E****	C****; I****; S****	F****; P****	L****; X****
Fender broken crash / Sárvédő sérülés törés		Excess	Excess	Excess	Excess

Example:



Element: Doors



		M****; E****	C****; I****; S****	F****; P****	L****; X****
Door broken crash / Ajtó sérülés törés		Excess	Excess	Excess	Excess

Example:



**Element:** Build up

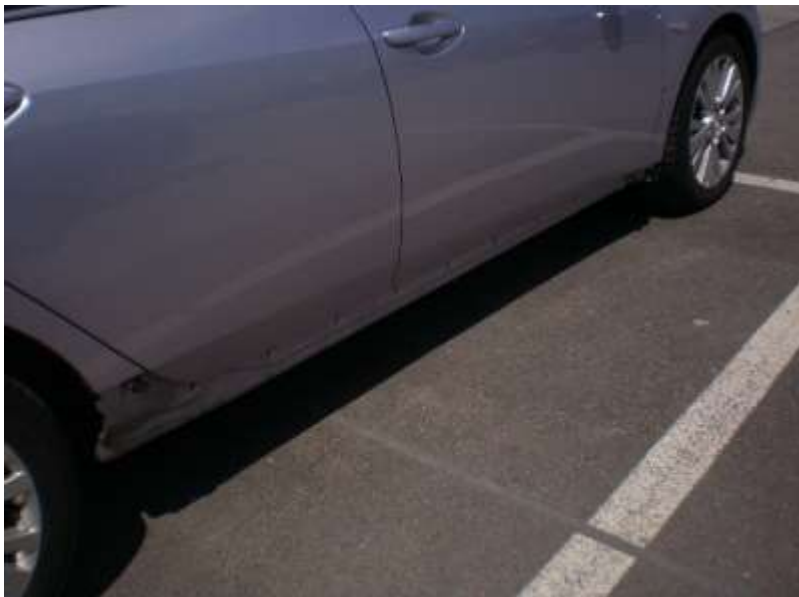


		M****; E****	C****; I****; S****	F****; P****	L****; X****
Build up broken crash / Felépítmény sérülés törés		Excess	Excess	Excess	Excess

Example:



Element: Door sill



		M****; E****	C****; I****; S****	F****; P****	L****; X****
Door sill damage / Ajtóküszöb		Önrész	Önrész	1350 € / 452000Ft	1750€ / 586200 Ft

### 3.1.5 Missing

Example:



**Element:** Outside mirror (missing)



	M****; E****	C****; I****; S****	F****; P****	L****; X****
Outside mirror missing / Tükör teljes	450€ / 160000Ft	600€ / 200000Ft	950€ / 320000Ft	1250€ / 418000Ft



### 3.1.7 Hail damage, dent

Example:



**Element:** Top of the car



		M****; E****	C****; I****; S****	F****; P****	L****; X****
Top of the car dent/ <b>Tető horpadás</b>		<i>max 2 pcs 2-5 cm / pcs</i>	<i>max 2 pcs 2-5 cm / pcs</i>	<i>max 2 pcs 2-5 cm / pcs</i>	<i>max 2 pcs 2-5 cm / pcs</i>
	Without paintwork damages	75€ / 25000Ft	75€ / 25000Ft	90€ / 30000Ft	105€ / 35000Ft
	With paintwork damages, no hole	165€ / 55000Ft	225€ / 75000 Ft	270€ / 90000 Ft	375€ / 125000 Ft
		<i>over 2 pcs /over 5cm</i>	<i>over 2 pcs /over 5cm</i>	<i>over 2 pcs /over 5cm</i>	<i>over 2 pcs /over 5cm</i>
	Excess	Excess	Excess	Excess	

### 3.2.1 Soiled

Example:



**Element: Seat**



		M****; E****	C****; I****; S****	F****; P****	L****; X****
Seat, carpet soiled/ <b>Ülés, kárpit folt</b>	db / pcs	27€ / 9000Ft	27€ / 9000Ft	35€ / 12000Ft	45€ / 15000Ft



Example:



Element: Carpet



		M****; E****	C****; I****; S****	F****; P****	L****; X****
Seat, carpet soiled/ Ülés, kárpit folt	db / pcs	27€ / 9000Ft	27€ / 9000Ft	35€ / 12000Ft	45€ / 15000Ft

## 3.2 Damage on the interior

### 3.2.2 Scratch

Example:



**Element:** Hatchback



		M****; E****	C****; I****; S****	F****; P****	L****; X****
Hatchback scratch/ csomagtér műanyag karc		105€ / 35000Ft	105€ / 35000Ft	150€ / 50000Ft	Repair Cost

### 3.2.3 Not fixed

Example:



**Element:** Adjustment panel



		M****; E****	C****; I****; S****	F****; P****	L****; X****
Adjustment panel missing, broken/ Kezelőpanel hiány, törés		Repair Cost	Repair Cost	Repair Cost	Repair Cost

### 3.2.4 Rip

Example:



Element: Seats



		M****; E****	C****; I****; S****	F****; P****	L****; X****
Seats rip / Ülés szakadás		Repair Cost	Repair Cost	Repair Cost	Repair Cost

### 3.2.5 Burn hole

Example:



Element: Seats



		M****; E****	C****; I****; S****	F****, P****	L****; X****
Seats (burn hole) / Ülés lyuk		360€ / 120000Ft	480€ / 160000Ft	Repair Cost	Repair Cost

Example:



Element: Carpet



		M****; E****	C****; I****; S****	F****; P****	L****; X****
Seats (burn hole) / Ülés lyuk		Repair Cost	Repair Cost	Repair Cost	Repair Cost

### 3.2.6 Missing

Example:



**Element:** Cargo holding cover



		M****; E****	C****; I****; S****	F****; P****	L****; X****
Cargo holding cover / Rear luggage cover missing / Csomagtér tábla hiány		225€ / 75000Ft	Repair Cost	Repair Cost	Repair Cost



Example:



Element: Rear luggage cover



		M****; E****	C****; I****; S****	F****; P****	L****; X****
Cargo holding cover / Rear luggage cover missing / <b>Csomagtér tábla hiány</b>		225€ / 75000Ft	Repair Cost	Repair Cost	Repair Cost



Example:



**Element:** Middle armrest



		M****; E****	C****; I****; S****	F****; P****	L****; X****
Middle armrest missing /damaged / Középső kartámasz hiány /sérülés		Repair Cost	Repair Cost	Repair Cost	Repair Cost

Example:

**Element:** Board Display



M****; E****		C****; I****; S****	F****; P****	L****; X****
Board Display missing or damage / Kijelző hiány / sérülés	Repair Cost			

### 3.3 Tires and Wheels

#### 3.3.1 Rip

Example:



**Element:** Tires



		M****; E****	C****; I****; S****	F****; P****	L****; X****
Tyre damage (total loss) / Gumi sérülés teljes		250€ / 85000Ft	350€ / 118000Ft	450€ / 150000Ft	650€ / 218000Ft

		M****; E****	C****; I****; S****	F****; P****	L****; X****
Tyre rip / Gumi szakadás	Max. 1 cm, surface / Felületi sérülés max. 1 cm	105€ / 35000Ft	150€ / 50000Ft	225€ / 75000Ft	390€ / 130000Ft

In case the tyre can be repaired (is not punctured), The Client is only responsible for the repair costs.

### 3.3.2 Crash

Example:



Element: Wheels



		M****, E****	C****, I****; S****	F****, P****	L****, X****
Rim / Felni	Crash, ground damage/ Törés, mély sérülés	350 € / 118000Ft	450 € / 150000Ft	650 € / 218000Ft	950€ / 320000Ft

Example:



Element: Hubcap

		M****; E****	C****; I****; S****	F****; P****	L****; X****
Hubcaps original / Díztárcsa eredeti		35€ / 12000Ft	35€ / 12000Ft	45€ / 15000 FT	60€ / 20000FT
		M****; E****	C****; I****; S****	F****; P****	L****; X****
Hubcaps non-original / Díztárcsa utángyártott		18€ / 6000Ft	18€ / 6000Ft	-	-

In case of structural damage / scratch

### 3.3.3 Scratch

Example:



**Element:** Scratch on rim



		M****; E****	C****; I****; S****	F****; P****	L****; X****
Rim 1 colour / Felni 1 színű	Surface scratch / Felületi karc	90€ / 30000Ft	105€ / 35000Ft	135€ / 45000Ft	150€ / 50000Ft

		M****; E****	C****; I****; S****	F****; P****	L****; X****
Rim multi colour / Felni többszínű	Scratch / Felületi karc	Excess / 350 € / 118000Ft	Excess / 450 € / 150000Ft	Excess / 650 € / 218000Ft	Excess / 950€ / 320000FT

### 3.4 Window

#### 3.4.1 Rip

Example:



**Element:** Windshield



		M****, E****	C****; I****; S****	F****, P****	L****, X****
Windshield change / Szélvédő csere		850 € / 285000Ft	1050 € / 352000Ft	1350€ / 452000Ft	1550€ / 520000Ft
		M****, E****	C****; I****; S****	F****, P****	L****, X****
Windshield repair field out of vision, only upper surface/ Szélvédő javítás		105€ / 35000Ft	135€ / 45000Ft	180€ / 60000Ft	180€ / 60000Ft

**Windshield repair:** Stone chip without crack, smaller than 5mm

**Windshield replacement:** Stone chip with crack, over 5mm / crack on rear or side windows



### 3.4.2 Break

Example:



**Element:** Rear window



		M****; E****	C****; I****; S****	F****; P****	L****; X****
Windshield change / Szélvédő csere		850 € / 285000Ft	1050 € / 352000Ft	1350€ / 452000Ft	1550€ / 520000Ft
		M****; E****	C****; I****; S****	F****; P****	L****; X****
Windshield repair field out of vision, only upper surface/ Szélvédő javítás		105€ / 35000Ft	135€ / 45000Ft	180€ / 60000Ft	180€ / 60000Ft



### 3.4.3 Rock fall

Example:



Element: Windshield



		M****, E****	C****, I****, S****	F****, P****	L****, X****
Windshield change / Szélvédő csere		850 € / 285000Ft	1050 € / 352000Ft	1350€ / 452000Ft	1550€ / 520000Ft
		M****, E****	C****, I****, S****	F****, P****	L****, X****
Windshield repair out field of vision, only upper surface/ Szélvédő javítás		105€ / 35000Ft	135€ /45000Ft	180€ / 60000Ft	180€ / 60000Ft

Loss, extra supplements, cleaning				
	M****; E****	C****; I****; S****	F****; P****	L****; X****
Key Loss / <b>Indító kulcs elvesztés</b>	Repair Cost			
	M****; E****	C****; I****; S****	F****; P****	L****; X****
Traffic license missing / <b>Forgalmi elvesztés</b>	45€ / 15000Ft			
	M****; E****	C****; I****; S****	F****; P****	L****; X****
GPS missing / <b>GPS elvesztés</b>	180€ / 60000Ft			
	M****; E****	C****; I****; S****	F****; P****	L****; X****
PTA (Personal Travel Assistant device) missing / <b>PTA elvesztés</b>	360€ / 120000Ft			
	M****; E****	C****; I****; S****	F****; P****	L****; X****
Navigation SD missing / <b>Navigációs kártya hiány</b>	Repair Cost	Repair Cost	Repair Cost	Repair Cost
	M****; E****	C****; I****; S****	F****; P****	L****; X****
Smoking / <b>Dohányzás</b>	120€ / 40000Ft			
	M****; E****	C****; I****; S****	F****; P****	L****; X****
Extra cleaning / <b>Extra takarítás</b>	60€ / 20400Ft	60€ / 20400Ft	90€ / 30600Ft	90€ / 30600Ft
	M****; E****	C****; I****; S****	F****; P****	L****; X****
Tyre repair set missing / <b>Gumi javító készlet hiány</b>	105€ / 35000Ft	105€ / 35000Ft	150€ / 50000Ft	195€ / 65000Ft
	M****; E****	C****; I****; S****	F****; P****	L****; X****
Refueling failure / <b>Félretankolás</b>	Repair Cost			
	M****; E****	C****; I****; S****	F****; P****	L****; X****
Inside damage caused by wild animal (rat, weasel) / <b>Vadállat okozta belső károk</b>	Repair Cost			

This damage catalogue contains estimated gross prices from an accepted workshop. These prices will be serve as base for the calculation of the repair charge / damage costs.

e.g. Seal/Logo from car workshop which delivered prices:

---

Place, Date, Signature / Stamp

