

International

Damage catalogue



Table of Contents

1. Preface	3
2. Definition of the damage strengths	7
3. Damage catalogue in pictures	11
3.1 Damage on the carriage.....	11
3.1.1 Scratch	11
3.1.2 Dent.....	18
3.1.3 Break	25
3.1.4 Crash.....	28
3.1.5 Missing	35
3.1.6 Warped.....	36
3.1.7 Hail Damage.....	37
3.2 Damage on the interior.....	408
3.2.1 Soiled.....	39
3.2.2 Scratch	40
3.2.3 Not fixed	41
3.2.4 Rip.....	42
3.2.5 Burn hole	43
3.2.6 Missing	45
3.3 Tires and Wheels	49
3.3.1 Rip.....	49
3.3.2 Crash.....	50
3.3.3 Scratch	51
3.4 Window	52
3.4.1 Rip.....	52
3.4.2 Break	53
3.4.3 Rock fall.....	54

1. Preface

To standardize the processes of car return and damage handling, new work papers, processes and guidelines were prepared.

Valid bases for the **comprehensibility** and for the **transparency** of the damage admission must be defined from the renting stations. The definition of an obligatory standard is part of the most important bases for a correct damage admission of the vehicles.

In order to be able to make the right judgement of damages the differentiation between **traces of usage** and **real damages** is crucial.

Traces of usage arise from the use of the vehicle as agreed and are unavoidable and therefore excluded as damage. The vehicle can be rented again without immediate repairs as it is in a **safe and immaculate technical condition**. Examples: minor cracks on the painting or dents smaller than Ø 1 cm.

Damages, such as scratches or dents where the vehicle can be rented again without immediate repair, are no traces of usage and are therefore described in this catalogue.

All damages where immediate repair is required, such when the vehicle is **not roadworthy anymore**, it has technical faults or the safety cannot be guaranteed, an individual inspection by a workshop might be applicable in addition to this catalogue. Example: crash of several parts.

A conscientious inspection of the vehicle is important for a correct judgement of the damages; corresponding conditions are necessary when doing the inspection. Essential prerequisites for the inspection of the vehicle are **daylight and/or sufficient artificial light**. Also adequate **weather conditions** in case of an outer inspection.

The typical damages of a rental vehicle are visualized in this damage catalogue by means of **example pictures and a clear classification**. Every picture describes a vehicle part and is judged based on the **level of severity**.

In addition to the below mentioned damage charges, other charges might apply as well, such as administrative costs, loss of usage of the vehicle, towing costs, transfer costs, etc.

Rental car insurance available in Hungary

Rental cars can be covered by various insurance policies. In Hungary all motor vehicle operators must have mandatory liability insurance (third party insurance) in case the renter causes collision damage to another party's vehicle. Consequently, car rental fees include mandatory liability insurance in all cases.

Please note that in case of theft or total value damage, the non waivable responsibility is 10% of present value of the rented car.

The Client shall be liable for any damages arising in the vehicle during the rent under unknown circumstances (e.g. damages caused by unknown perpetrator). If the car is entered by force, the Client shall be responsible for making the relevant denunciation at the Police station.

The Client shall be liable up to the new purchase price of the car as applicable from time to time if:

- The CDW and/or TP insurance is not provided and the car driven by the Client is subject to damages for an accident caused by the fault of The Client or the car is stolen.
- The car is stolen and the Client is not able to present to the Lessor the circulation license and/or the keys of the car.

Please note that the Client shall be liable for any new damages arising during the term of hire even if the Check out/in protocol is not signed at the time of return (e.g. you return the car out of hours or you do not wait until the report is completed).

Collision Damage Waiver (V)

We recommend CDW insurance to reduce the compensation payable by the renter should the rental car be involved in an accident that the renter is responsible for. With CDW coverage the renter may only be held liable for up to the excess amount per loss event. The excess amount depends on the car group (see the table below). You can reduce the excess amount further if in addition to CDW coverage you also opt for our Top Cover CDW or Super Top Cover CDW insurance coverage. The applicable excess amounts are shown in the table below.

The renter will be financially liable for any damage sustained by the rental vehicle during the rental period that the renter was not aware of at the time it was sustained (e.g. damage caused by unknown parties). If the car is broken into, the renter must report the incident to the police. CDW insurance will not cover damage to the glass, wheels or tires of the rental vehicle, damage to the passenger compartment or damage from misuse.

Collision Damage Waiver removes the drivers responsibility to a part of the vehicle in case of damage.

If CDW is not accepted the customer will be held liable for the full value of the car.

If CDW is accepted, customer is only responsible for the following amounts:

CRS Code	Deductible
	EUR
MCMR, MCMN, ECMR, EDMR, EXMR, CCCC, CCMR, CDMR, CLMR, CPMR, CWMR, CCMH, IDMR, IDAR, ILMR	500.00
ILAE, IVMR, SCMR, SDMR, SDAR, SFAR, SWMR, SVMR, STMR, SWAR, FVMR, FDMR, FDAR, FWAR, FXAR, PDAR, PVMR, PVAR, LVAR, XFAR, A	900.00

The CDW insurance shall not include damages to wheels and tyres, as well as damages arising in the passenger cabin or arising from improper handling and damages of bottom of the car.

Third Party Insurance (TI)

Protection coverage for the vehicle includes Third Party Liability with unlimited cover for personal injuries and material damages. Excluded from the protection is the use of the vehicle for the transport of dangerous goods. All protection as part of the rental contract will become void, in particular, if an unauthorized driver has used the vehicle or if the driver of the vehicle does not possess the required driver's license at the time of the event giving rise to claim.

Theft Protection (D)

Theft Protection removes the drivers responsibility to a part of the vehicle in case of theft.

If TP is not accepted, the customer will be held liable for the full value of the car.

If TP is accepted, customer is only responsible for the following amounts:

CRS Code	Deductible
	EUR
MCMN, MCMR, ECMR, EDMR, ECMH, EXMR, CCCC, CCMR, CCMH, CDMR, CLMR, CPMR, CWMR, IDMR, IDAR, ILMR, A	2300.00
IVMR, SDMR, SDAR, SWMR, SWAR, FVMR, PVMR, PVAR, SVMR, STMR, SFAR	5800.00
ILAE, FDMR, FDAR, FXAR, PDAR, LVAR, XFAR	6500.00

Personal Accident Protection (I)

By taking out personal accident protection can also be extended to cover the consequences of an accident.

By taking out PAP the limit of liability is:

Benefit	Max. amount per insured person	Max. amount per insured person
EUR	driver only	all passengers
Accidental death protection	3225.00	3225.00
Accidental total disabilityprotection	6450.00	6450.00

Top Cover TP (H)

If TP is already included in the rates, the renter can choose Top Cover TP to reduce the Non-Waiverable Responsibility.

If Top Cover TP is accepted, customer is only responsible for the following amounts:

CRS Code	Deductible
	EUR
MCMN, MCMR, ECMR, ECMH, EDMR, EXMR, CCCC, CCMR, CCMH, CDMR, CLMR, CPMR, CWMR, IDMR, IDAR, ILMR, A	1700.00
IVMR, SDMR, SDAR, SWMR, SWAR, SVMR, STMR, SFAR, PVMR, PVAR	4200.00
ILAE, FDMR, FDAR, FVMR, FXAR, PDAR, LVAR, XFAR	4700.00

Top Cover CDW (G)

If CDW is already included in the rates, the renter can choose Top Cover CDW to reduce the Non-Waiverable Responsibility.

If Top Cover CDW is accepted, customer is only responsible for the following amounts:

CRS Code	Deductible
	EUR
MCMN, MCMR, ECMR, EDMR, EXMR, CCCC, CCMR, CDMR, CLMR, CPMR, CWMR, CCMH, IDMR, IDAR, ILMR	250.00
ILAE, IVMR, SCMR, SDMR, SDAR, SWMR, SWAR, SVMR, STMR, SFAR, FVMR, FDMR, FDAR, FVAR, FXAR, PDAR, PVMR, PVAR, LVAR, XFAR, A	450.00

Super Top Cover CDW (GF)

If Top Cover CDW is already included in the rates, the renter can choose Super Top Cover CDW to eliminate the Non-Waiverable Responsibility.

If Top Cover CDW is accepted, customer is only responsible for the following amounts:

CRS Code	Deductible
	EUR
MCMN, MCMR, ECMR, EDMR, CDMR, ECMH, EXMR, CCCC, CCMR, CCMH, CLMR, CPMR, CWMR, IDMR, IDAR, ILAE, ILMR, IVMR, SDMR, SDAR, SWMR, SWAR, SVMR, STMR, SFAR, FVMR, FDMR, FDAR, FXAR, PDAR, PVMR, PVAR, LVAR, XFAR, A	0.00

Tyre and Windscreen Coverage (GT)

Tyre and Windscreen Coverage provides cover against the consequences of damages on tires and windscreen. If GT is not accepted the customer will be held liable for the full value of damages on tires and windscreen. If GT is accepted, customer is only responsible for the following amounts: 0.00 EUR.

2. Definition of the damage strengths

Scratch

Scratches are mechanical damages to the surface which are caused by sharp/pointed objects and are mostly visible as a longish deepening.

We define the scratching damage about the **forming** (superficial or deep) and **the length or size** (e. g. > 5 cm) of the scratches.

A **deep scratch** is characterized by a perceptible deepening in the paintwork. This damage only can be cleared by painting or renewal of the component.

Dent

A **dent** is a concave¹ deformation distortion at the surface of the car body. We define dents **with** and **without varnish damage** as well as **different diameters** of the dents.

A dent without varnish damage can in general be removed by pushing or pulling. In case the dent has caused damages at the paintwork, the entire area needs to get repainted.

Dents at **plastic components** (e. g. bumper) in general only can be removed by exchanging the respective parts.

Break

A **break** describes a plastic deformation of a component up to its destruction. The break of a component is in general made by an outer strength influence (e. g. annoyance).

Attachments like headlight, rear lights, mirror glass, mirror case are examples of broken items.

¹Deformation by strength influence from the outside inside

Crash

A **crash**, is defined as a heavy damage of one or several connected elements, which extend the category of scratch, dent , break.

Missing

Missing defines the “***no longer available***” status of a component in the vehicle. Most common items are rear luggage cover, aerial radio devices, GPS CD's or SD cards.

The exchange or theft of the original wheels/tires or the spare wheel also is described about this damage strength.

Not fixed

The damage strength **not fixed** describes an unfastened or loose component at the vehicle.

Examples of it are using levers, switch or also seats

Defect

The condition **defect** defines generally this “*not working any more*” a mechanical or also electrical component in the vehicle. The reason for it can be justified itself by an outer influence (e. g. being missing operation, violent damage) like also failure of the component both.

Being able to list key, remote control, radio etc. as examples of faulty components.

Rip

A **rip** is a damage to the surface of a component by an outer influence or overtaking.

Construction tarpaulins, upholstery/seats, interior trim or also tire, are examples of this damage strength.

Hole

The damage strength **hole** defines an opening/a cavity in a component generally and is by an outer influence or rather penetrate a foreign material to the surface caused.

Examples of the damage strength “hole” are tires, stuffing, seats interior trim or open building plan.

Warped

The damage strength **warped** defines the mechanical damage to a component by an outer strength influence.

Examples for warped components are loading up side, hydraulic cylinder, windshield wiper arm or number plates.

Untight

The damage strength **untight** describes out systems or containers generally an outflow of liquids in the vehicle.

Examples of liquid leaving are water cooler, condenser or sump.

Soiled

The condition **soiled** describes generally an excessive pollution of the vehicle, particularly the interior or the cargo hold or trunk. These can result from an improper use for also inadequate securing of load. Not removable, visible spots are a considerable defect in the cabin. Pollutions which aren't removable by a normal cleaning on the station are considered a damage.

Examples of it are soil attachments in the suitcase or cargo hold of the vehicle to seat, carpet or interior trims like liquids also run out.

Burn hole

The damage strength burn hole defines a damage by impact of heat caused mostly by **cigarette burning** ash falling down or handling a cigarette inattentively in the interior of the vehicle.

Damage pictures happening frequent are burn holes in the area of the A column driver side at seats, car mats, interior trims of the doors like also at the roof interior trim.

Rock fall

A **rock fall** is a selective damage to the surface to car body components (e. g. bumper, headlight, hood, windshield) and arises in general from foreign elements whirled up. Rock falls can be removed painting the damaged zones, exchange or also Smartrepair. A rock fall is a selective damage this one whether “**field of view**” (Piece of paper area of the wiper blade driver side) and “**not in the field of view**” distinguished.

Damage by hail

Damages caused by **hail** describes plenty of dents all over the car body.

3. Damage catalogue in pictures

3.1 Damage on the carriage

3.1.1 Scratch

Example:



Element: Wing



Car group		M***, E***	C***, I***, S***	F***, P***, L***, X***
Size in cm		0-15	0-15	0-15
Damage charge in LOCAL CURRENCY	On the surface	12.000.- (40.- Eur)	12.000.- (40.- Eur)	12.000.- (40.- Eur)
	On the ground coat	48.000.- (155.- Eur)	60.000.- (195.- Eur)	72.000.- (235.- Eur)

Example:



Element: Fender



Car group		M***, E***,	C***, I***, S***	F***, P***, L***, X***
Size in cm		0-15	0-15	0-15
Damage charge in LOCAL CURRENCY	On the surface	12.000.- (40.- Eur)	12.000.- (40.- Eur)	12.000.- (40.- Eur)
	On the ground coat	48.000.- (155.- Eur)	60.000.- (195.- Eur)	72.000.- (235.- Eur)

Example:



Element: Rear bumper

Car group		M***, E***	C***, I***, S***	F***, P***, L***, X***
Size in cm		0-15	0-15	0-15
Damage charge in LOCAL CURRENCY	On the surface	12.000.- (40.- Eur)	12.000.- (40.- Eur)	12.000.- (40.- Eur)
	On the ground coat	48.000.- (155.- Eur)	54.000.- (175.- Eur)	60.000.- (195.- Eur)

Example:



Element: Front bumper



Car group		M***, E***	C***, I***, S***	F***, P***, L***, X***
Size in cm		0-15	0-15	0-15
Damage charge in LOCAL CURRENCY	On the surface	12.000.- (40.- Eur)	12.000.- (40.- Eur)	12.000.- (40.- Eur)
	On the ground coat	48.000.- (155.- Eur)	54.000.- (175.- Eur)	60.000.- (195.- Eur)

Example:



Element: Doors



Car group		M***, E***	C***, I***, S***	F***, P***, L***, X***
Size in cm		0-15	0-15	0-15
Damage charge in LOCAL CURRENCY	On the surface	12.000.- (40.- Eur)	12.000.- (40.- Eur)	12.000.- (40.- Eur)
	On the ground coat	48.000.- (155.- Eur)	60.000.- (195.- Eur)	72.000.- (235.- Eur)

Example:



Element: Engine bonnet



Car group		M***, E***	C***, I***, S***	F***, P***, L***, X***
Size in cm		0-5	0-5	0-5
Damage charge in LOCAL CURRENCY	On the surface	12.000.- (40.- Eur)	12.000.- (40.- Eur)	12.000.- (40.- Eur)
	On the ground coat	48.000.- (155.- Eur)	60.000.- (195.- Eur)	72.000.- (235.- Eur)

Example:



Element: Fender and doors



Car group		M***, E***	C***, I***, S***	F***, P***, L***, X***
Size in cm		0-15	0-15	0-15
Damage charge in LOCAL CURRENCY	On the surface	28.000.- (90.- Eur)	28.000.- (90.- Eur)	28.000.- (90.- Eur)
	On the ground coat	Excess	Excess	Excess

3.1.2 Dent

Example:



Element: Engine bonnet



Car group		M***, E***		C***, I***, S***		F***, P***, L***, X***	
Size in cm		0-5	5-15	0-5	5-15	0-5	5-15
Damage charge in LOCAL CURRENCY	Without paintwork damages	35.000.- (115.- Eur)	Excess	45.000.- (145.- Eur)	Excess	55.000.- (175.- Eur)	Excess
	With paintwork damages	Excess	Excess	Excess	Excess	Excess	Excess

Example:



Element: Hatchback



Car group		M***, E***		C*** I***, S***		F***, P***, L***, X***	
Size in cm		0-5	5-15	0-5	5-15	0-5	5-15
Damage charge in LOCAL CURRENCY	Without paintwork damages	35.000.- (115.- Eur)	Excess	45.000.- (145.- Eur)	Excess	55.000.- (175.- Eur)	Excess
	With paintwork damages	Excess	Excess	Excess	Excess	Excess	Excess

Example:



Element: Front fender



Car group		M***, E***		C*** I***, S***		F***, P***, L***, X***	
Size in cm		0-5	5-15	0-5	5-15	0-5	5-15
Damage charge in LOCAL CURRENCY	Without paintwork damages	35.000.- (115.- Eur)	Excess	45.000.- (145.- Eur)	Excess	55.000.- (175.- Eur)	Excess
	With paintwork damages	Excess	Excess	Excess	Excess	Excess	Excess

Example:



Element: Rear fender



Car group		M***, E***		C*** I***, S***		F***, P***, L***, X***	
Size in cm		0-5	5-15	0-5	5-15	0-5	5-15
Damage charge in LOCAL CURRENCY	Without paintwork damages	35.000.- (115.- Eur)	Excess	45.000.- (145.- Eur)	Excess	55.000.- (175.- Eur)	Excess
	With paintwork damages	Excess	Excess	Excess	Excess	Excess	Excess

Example:



Element: Rear bumper



Car group		M***, E***		C*** I***, S***		F***, P***, L***, X***	
Size in cm		0-5	5-15	0-5	5-15	0-5	5-15
Damage charge in LOCAL CURRENCY	Without paintwork damages	48.000.- (155.- Eur)	Excess	54.000.- (175.- Eur)	Excess	60.000.- (195.- Eur)	Excess
	With paintwork damages	60.000.- (195.- Eur)	Excess	70.000.- (225.- Eur)	Excess	80.000.- (260.- Eur)	Excess

Example:



Element: Front bumper



Car group		M***, E***		C***, I***, S***		F***, P***, L***, X***	
Size in cm		0-5	5-15	0-5	5-15	0-5	5-15
Damage charge in LOCAL CURRENCY	Without paintwork damages	48.000.- (155.- Eur)	Excess	54.000.- (175.- Eur)	Excess	60.000.- (195.- Eur)	Excess
	With paintwork damages	60.000.- (195.- Eur)	Excess	70.000.- (225.- Eur)	Excess	80.000.- (260.- Eur)	Excess

Example:



Element: Corner column



Car group		M***, E***		C***, I***, S***		F***, P***, L***, X***	
Size in cm		0-5	5-15	0-5	5-15	0-5	5-15
Damage charge in LOCAL CURRENCY	Without paintwork damages	35.000.- (115.- Eur)	Excess	45.000.- (145.- Eur)	Excess	55.000.- (175.- Eur)	Excess
	With paintwork damages	Excess	Excess	Excess	Excess	Excess	Excess

3.1.3 Break

Example:



Element: Outside mirror only



Car group	M***, E***	C*** I***, S***	F***, P***, L***, X***
Damage charge in LOCAL CURRENCY	35.000.- (115.- Eur)	45.000.- (145.- Eur)	55.000.- (175.- Eur)

Example:



Element: Direction indicator glass



Car group	M***, E***, C***	I***, S***	F***, P***, L***, X***
Damage charge in LOCAL CURRENCY	35.000.- (115.- Eur)	45.000.- (145.- Eur)	55.000.- (175.- Eur)

Example:



Element: Tail lamp



Car group	M***, E***	C***, I***, S***	F***, P***, L***, X***
Damage charge in LOCAL CURRENCY	45.000.- (145.- Eur)	60.000.- (195.- Eur)	75.000.- (245.- Eur)

3.1.4 Crash

Example:



Element: Front bumper



Car group	M***, E***	C***, I***, S***	F***, P***, L***, X***
Damage charge in LOCAL CURRENCY	Excess	Excess	Excess

Example:



Element: Front fender



Car group		M***, E***	C***, I***, S***	F***, P***, L***, X***
Damage charge in LOCAL CURRENCY		Excess	Excess	Excess

Example:



Element: Rear fender



Car group		M***, E***	C***, I***, S***	F***, P***, L***, X***
Damage charge in LOCAL CURRENCY		Excess	Excess	Excess

Example:



Element: Doors



Car group		M***, E***	C***, I***, S***	F***, P***, L***, X***
Damage charge in LOCAL CURRENCY		Excess	Excess	Excess

Example:



Element: Truck buildup



Car group		M***, E***, C***			I***, S***			F***, P***, L***, X***		
Damage charge in LOCAL CURRENCY		X	X	X	X	X	X	X	X	X

Example:



Element: Build up



Car group	M***, E***	C***, I***, S***	F***, P***, L***, X***
Damage charge in LOCAL CURRENCY	Excess	Excess	Excess

Example:



Element: Door sill



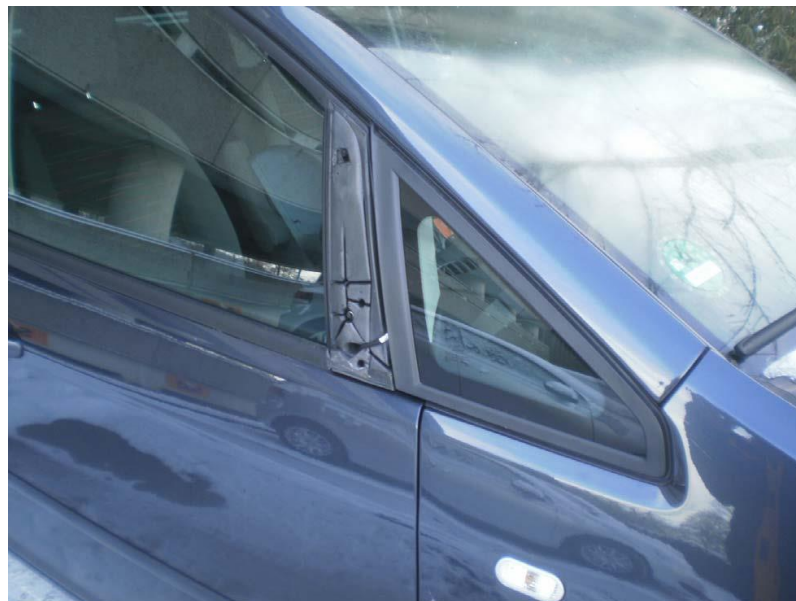
Car group		M***, E***	C***, I***, S***	F***, P***, L***, X***
Damage charge in LOCAL CURRENCY		Excess	Excess	Excess

3.1.5 Missing

Example:



Element: Outside mirror



Car group		M***, E***	C***, I***, S***	F***, P***, L***, X***
Damage charge in LOCAL CURRENCY		Excess	Excess	Excess

3.1.6 Warped

Example:



Element: Lift gate



Car group		M***, E***, C***			I***, S***			F***, P***, L***, X***		
Damage charge in LOCAL CURRENCY		X	X	X	X	X	X	X	X	X

3.1.7 Hail damage, dent

Example:



Element: Top of the car



Car group		M***, E***	C***, I***, S***	F***, P***, L***, X***
Size in cm		0-5 max.	0-5 max.	0-5 max.
Damage charge in LOCAL CURRENCY	Only one dent	35.000.- (115.- Eur)	45.000.- (145.- Eur)	55.000.- (175.- Eur)
	More than one dent	Excess	Excess	Excess

3.2.1 Soiled

Example:



Element: Seat



Car group	M***, E***		C***, I***, S***		F***, P***, L***, X***	
Damage charge in LOCAL CURRENCY	6.000.- (20.- Eur) /single	35.000.- (115.- Eur) /all	6.000.- (20.- Eur) /single	35.000.- (115.- Eur) /all	6.000.- (20.- Eur) /single	35.000.- (115.- Eur) /all

Example:



Element: Carpet



Car group	M***, E***	C***, I***, S***	F***, P***, L***, X***
Damage charge in LOCAL CURRENCY	6.000.- (20.-Eur) /carpet	6.000.- (20.-Eur) /carpet	6.000.- (20.-Eur) /carpet

3.2 Damage on the interior

3.2.2 Scratch

Example:



Element: Hatchback



Car group		M***, E***	C***, I***, S***	F***, P***, L***, X***
Size in cm		5-	0-	0-
Damage charge in LOCAL CURRENCY		30.000.- (100.- Eur)	40.000.- (130.- Eur)	50.000.- (160.- Eur)

3.2.3 Not fixed

Example:



Element: Adjustment panel



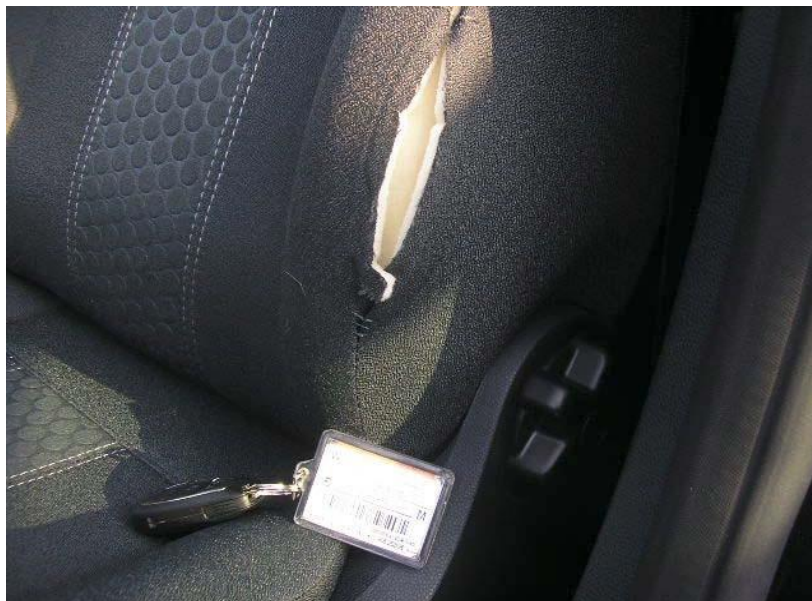
Car group		M***, E***, C***	I***, S***	F***, P***, L***, X***
Damage charge in LOCAL CURRENCY		100.000.- (325.- Eur)	150.000.- (485.- Eur)	200.000.- (645.- Eur)

3.2.4 Rip

Example:



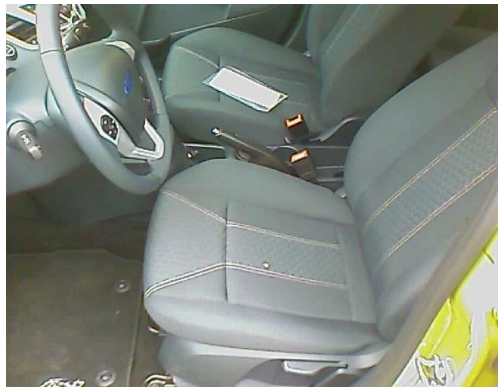
Element: Seats



Car group	M***, E***	C***, I***, S***	F***, P***, L***, X***
Damage charge in LOCAL CURRENCY	100.000.- (325.- Eur)	150.000.- (485.- Eur)	200.000.- (645.- Eur)

3.2.5 Burn hole

Example:



Element: Seats



Car group	M***, E***	C***, I***, S***	F***, P***, L***, X***
Damage charge in LOCAL CURRENCY	100.000.- (325.- Eur)	150.000.- (485.- Eur)	200.000.- (645.- Eur)

Example:



Element: Carpet



Car group		M***, E***, C***			I***, S***			F***, P***, L***, X***		
Damage charge in LOCAL CURRENCY		X	X	X	X	X	X	X	X	X

3.2.6 Missing

Example:



Element: Cargo holding cover



Car group		M***, E***	C***, I***, S***	F***, P***, L***, X***
Damage charge in LOCAL CURRENCY		100.000.- (325.- Eur)	150.000.- (485.- Eur)	200.000.- (645.- Eur)

Example:



Element: Rear luggage cover



Car group	M***, E***	C***, I***, S***	F***, P***, L***, X***
Damage charge in LOCAL CURRENCY	100.000.- (325.- Eur)	150.000.- (485.- Eur)	200.000.- (645.- Eur)

Example:



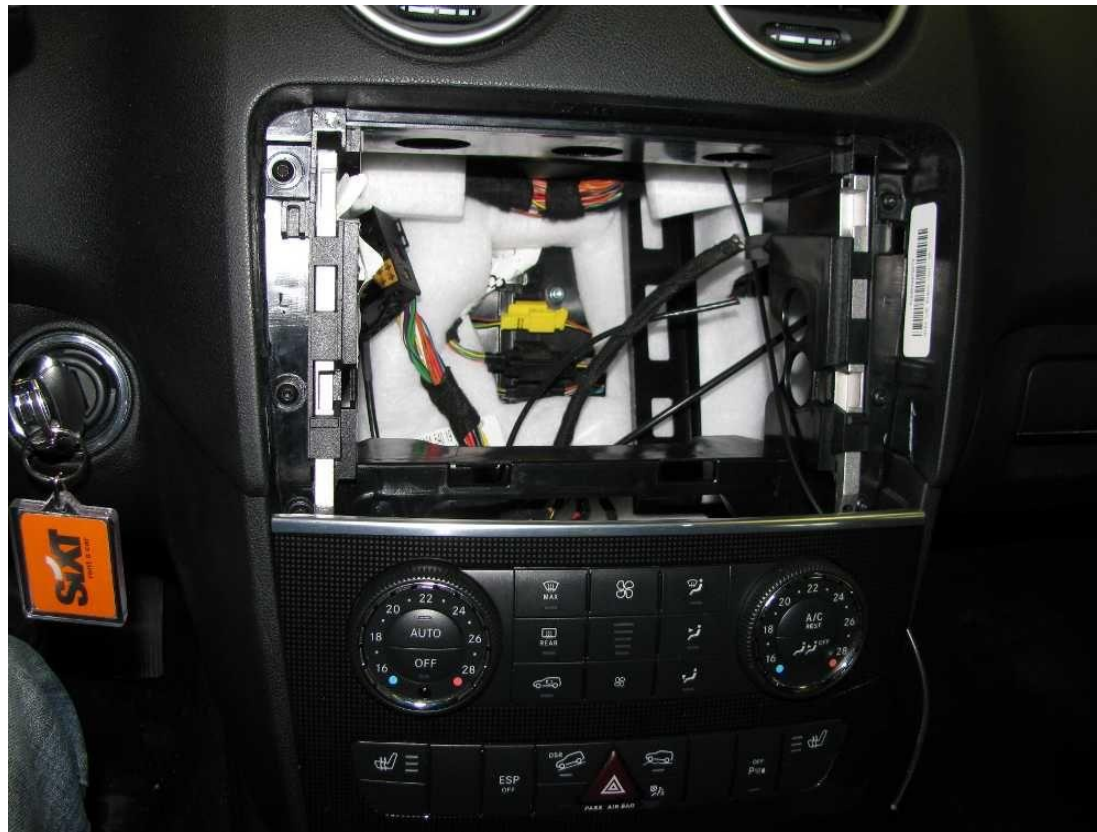
Element: Middle armrest



Car group		M***, E***	C***, I***, S***	F***, P***, L***, X***
Damage charge in LOCAL CURRENCY		50.000.- (160.- Eur)	75.000.- (240.- Eur)	100.000.- (325.- Eur)

Example:

Element: navigation system



Car group	M***, E***	C***, I***, S***	F***, P***, L***, X***
Damage charge in LOCAL CURRENCY	200.000.- (645.- Eur)	300.000.- (970.- Eur)	400.000.- (1290.- Eur)

3.3 Tires and Wheels

3.3.1 Rip

Example:



Element: Tires



Car group		M***, E***	C***, I***, S***	F***, P***, L***, X***
Damage charge in LOCAL CURRENCY		30.000.- (100.- Eur)	50.000.- (160.- Eur)	70.000.- (225.- Eur)

3.3.2 Crash

Example:



Element: Wheels



Car group		M***, E***	C***, I***, S***	F***, P***, L***, X***
Damage charge in LOCAL CURRENCY	Rim	30.000.- (100.- Eur)	40.000.- (130.- Eur)	50.000.- (160.- Eur)
	Hubcaps (original)	9.000.- (29.- Eur)	12.000.- (38.-Eur)	15.000.- (48.- Eur)

3.3.3 Scratch

Example:



Element: Scratch at rim



Car group		M***, E***	C***, I***, S***	F***, P***, L***, X***
Size in cm		0-15	0-15	0-15
Damage charge in LOCAL CURRENCY	Only the rim	24.000.- (77.- Eur)	30.000.- (97.- Eur)	36.000.- (116.- Eur)
	Spoke of the rim only	24.000.- (77.- Eur)	30.000.- (97.- Eur)	36.000.- (116.- Eur)

3.4 Window

3.4.1 Rip

Example:



Element: Windshield



Car group		M***, E***,	C***, I***, S***	F***, P***, L***, X***
Damage charge in LOCAL CURRENCY		24.000.- (77.- Eur)	36.000.- (116.- Eur)	50.000.- (160.- Eur)

3.4.2 Break

Example:



Element: Rear window



Car group		M***, E***,	C***, I***, S***	F***, P***, L***, X***
Damage charge in LOCAL CURRENCY		24.000.- (77.- Eur)	36.000.- (116.- Eur)	50.000.- (160.- Eur)

3.4.3 Rock fall

Example:



Element: Windshield (outside field of vision)



Car group		M***, E***,	C***, I***, S***	F***, P***, L***, X***
Damage charge in LOCAL CURRENCY		24.000.- (77.- Eur)	36.000.- (116.- Eur)	50.000.- (160.- Eur)

Example:



Element: Windshield (inside field of vision)



Car group		M***, E***,	C***, I***, S***	F***, P***, L***, X***
Damage charge in LOCAL CURRENCY		24.000.- (77.- Eur)	36.000.- (116.- Eur)	50.000.- (160.- Eur)

This damage catalogue contains estimated gross prices from an accepted workshop. These prices will be serve as base for the calculation of the repair charge / damage costs.

e.g. Seal/Logo from car workshop which delivered prices:

Place, Date, Signature / Stamp

